

**Relationship of
Theory and Design to eLearning:**



**Principles of Andragogy
and Universal Design**

Mary Bold, Ph.D., CFLE
Lillian Chenoweth, Ph.D.

TEXAS WOMAN'S UNIVERSITY

Theory serves as...

Lens

Framework

Foundation

and comes with...

Assumptions

Principles, tenets

Holes

Content Analysis of Sloan-C Conference Descriptions 2005

[this session with Bold & Chenoweth]

Carl Rogers's Theory of Student-Centered Education

Polytomous Item-Response Theory Models

Media-Synchronicity Theory

Glasser's Choice Theory

Learning Theory

TIP-Theory

2004

Learning Theory

2003

Administrative Theory

Adult Learning Theory

Engagement Theory

2002

Learning Theory

Instructional Design Theory

Situated Learning Theory

Collaborative Learning Theory

Media Richness Theory

2001

Constructivist Theory

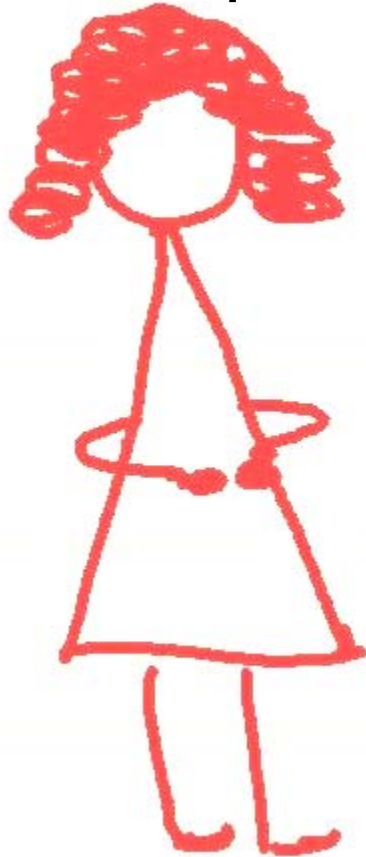
Andragogy...

***adults as learners
who are different
from children***

assumptions:

***adults are different
adults can learn
adults can articulate
wants and needs***

Miss A, our quintessential teacher, knew exactly what to do with children. But she was caught off guard when her adult students posed questions like,



Where do I park?

Can my kids come?

and

Will you go out with me?

Andragogy tenets:

The adult learner...

is independent

wants efficiency

seeks new knowledge

needs interaction for optimal learning

wants a facilitator, not a teacher

No man is an island...

except that the independent adult learner really is more independent than he or she appears to be, and that's the case in spite of needs for interaction and facilitation.



Andragogy holes:

What we still have to learn...

how to provide for diverse styles

how to measure motivation

how to identify barriers early

how to guide without directing

how to assess whole programs

The simple gain score is alluring.

The better measure is across the entire program.



Universal Design

Universal ... no assumption of:

- ...a single unifying concept or solution
- ...serving all populations simultaneously
- ...a formula or recipe for success

Architecture

Environment

Education

Learning

Furniture

Structure

Context

Standards

Process

Tools

Another allure is the theory of everything.

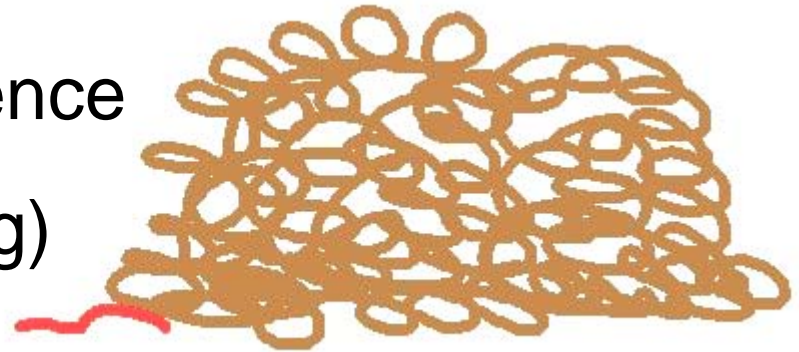
That's not universal design.

A better approach:

look for the smallest difference

that will make a difference

(good systems thinking)



UD meets Andragogy

Provide for diverse styles:

- 1 - UD increases usability for everyone, thus diverse learning styles are accommodated**
- 2 - Increased benefit for learners who use more than one learning mode**

Research-based design: branching



a 3-minute video
plus a transcript
plus an audio
plus an outline
plus permission
to make it 30 seconds....

UD meets Andragogy

Measure motivation, identify barriers:

- 1 - UD increases alternatives to allow learners to find best routes**
- 2 - Increased benefit when motivation cannot be discerned**

Adult learners & barriers:

They may find their own routes with little consultation or notice to instructors or administrators.



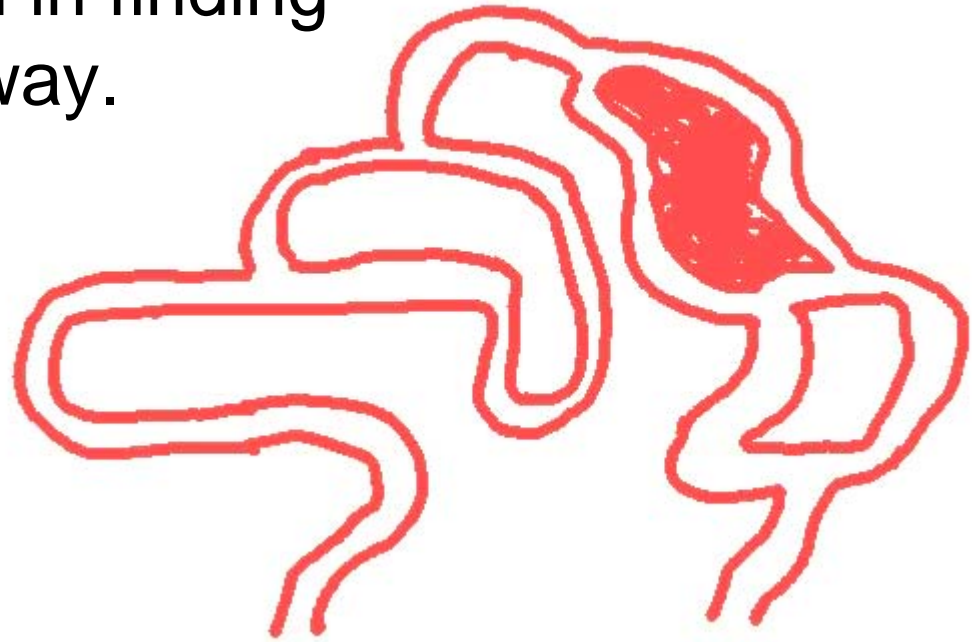
UD meets Andragogy

Guide without directing:

- 1 – Adaptability is integrated**
- 2 - Increased benefit for learners who are accustomed to being the director (in other settings)**

Sound assumption:

Adults will be
self-directive learners
and, if supported by
an adaptable environment,
will flourish in finding
their own way.



UD meets Andragogy

Assess whole programs:

- 1 – Embedded assessments can be integrated at start or as needed**
- 2 - Increased benefit for learners who welcome assessment tied to the knowledge & competencies they came for**

Embedded assessment

- ~ May be integrated with grading
- ~ Within program and without



Independence



Plagiarism Quiz

This Quiz is aimed at familiarizing students with principles of academic integrity, copyright, and plagiarism. It will also remove any misconceptions about what could be considered plagiarism.

Scholarly
Writing
Quick tips for the new graduate student

Courting
APA
with your style guide...

Ease and Efficiency

COURSES > FAM & PUB POL 5823-01 > SYLLABUS/DATES > CHART OF DUE DATES



Due Dates

When...	What...	How...
January 14	Optional Seminar	At 2:30 - 4 PM Human Development Building, Denton Campus
January 18	Course activity begins	Log in to Blackboard from www.twu.edu or http://twu6.blackboard.com/
January 25	Working Portal Email	Detailed instructions for creating a TWU Pioneer Portal account and forwarding email are available on the TWU website and through Helpdesk.
January 28	Confirm working email	Successful send or send & receive or bounceback will be the test. Contact Sadguna Anasuri (sanasuri@mail.twu.edu) or call the Helpdesk.
February 1 - 22	Basics of Public Policy	Participate in weekly discussions. Deadlines are every Tuesday midnight (end of day of February 8, 15, 22). Use Bogenschneider text and other readings. Contribute to the survey of policy-related websites. Due date for doctoral students: February 8 Due date for Master's students: February 15

New Knowledge

Texas Woman's University
Department of Family Sciences



[Table of contents](#)
[About this CD](#)
[About FS 5003](#)

Guides

- [The Fannin Guide to Classic Research in Lifespan Human Development](#)
(71 pages - view or print using Acrobat Reader)
- [Resources and References for the Fannin Guide](#)
(27 pages - view or print using Acrobat Reader)
- [Fannin's 2004 Addenda](#)
(23 pages - view or print using Acrobat Reader)

Special Topics

- [Facts about the Elderly](#)
- [Health in Middle Adulthood](#)
- [Vaillant's Guide to Aging Well](#)
- [Retirement](#)
- [Death](#)

Research Summaries

- [Marcia's Identity Status Interview](#)
- [Cognitive Function in Early Adulthood](#)
- [Theorists and Quotes](#)
- [Fact, Legend, and Gossip](#)

Interaction

[◀◀ Previous Message](#) [Next Message ▶▶](#)

Thread Detail

Utilizing Research via Theory	Roeber, Sarah	02-09-2005 15:14
Two-Communities Theory	XXXXXXXXXXXXXXXXXXXX	02-15-2005 17:23
Re: Two-Communities Theory	Houser, Amy M.	02-15-2005 21:11
The theory of the political environ...	Houser, Amy M.	02-15-2005 20:50
Re: The theory of the political ...	Hamlett, Tiffany	02-15-2005 21:41
Re: The theory of the politic...	XXXXXXXXXXXXXXXXXXXX	02-17-2005 17:15
Re: Utilizing Research via Theory	Hamlett, Tiffany	02-15-2005 21:22

Guided Practice



Weekly Test #7- Do not open until you are ready to take the REAL test

[Take quiz](#)



[Preview versions of Non-credit Practice Quizzes](#)

Non-interactive preview versions of non-credit quizzes. Please use these PDF files to either print out or save



[Practice Quizzes for Module 1](#)

All quizzes inside this folder are strictly for practice. Take them as many times as you like. Scores are FYI



[Practice Quizzes for Module 2](#)

All quizzes inside this folder are strictly for practice. Take them as many times as you like. Scores are FYI



[Practice Quizzes for Module 3](#)

All quizzes inside this folder are strictly for practice. Take them as many times as you like. Scores are FYI



[Practice Quizzes for Module 4](#)

All quizzes inside this folder are strictly for practice. Take them as many times as you like. Scores are FYI



[Practice Quizzes for Module 5](#)

All quizzes inside this folder are strictly for practice. Take them as many times as you like. Scores are FYI



[Practice Quizzes for Module 6](#)

All quizzes inside this folder are strictly for practice. Take them as many times as you like. Scores are FYI



[Practice Quizzes for Module 7](#)

All quizzes inside this folder are strictly for practice. Take them as many times as you like. Scores are FYI

Session at Sloan-C:

Saturday, November 19, 2005

10:35 a.m. – 11:10 a.m.

Session 6, Salon 2

Extended materials and examples available at
www.boldproductions.com

Mary Bold, Ph.D., CFLE
bold@marybold.com

Lillian Chenoweth, Ph.D.
Lillian.Chenoweth@gmail.com